

# Apartments in wood-concrete hybrid construction

Wasserbillig, LU



## Project details

Client	Blumer-Lehmann Sàrl, Wasserbillig, LU
Architecture	FAT Architects
Project type	Residential construction apartment building
Construction type	Wood element construction
Services	Timber construction
Own products	Terrassen
Construction	2020-2022
Locality	Wasserbillig
Country	Luxembourg

## Sustainable and eco-friendly living in an apartment building with Moselle river views

The modern 'Sântis' apartment building stands on a sunny hillside in a former vineyard in Wasserbillig, Luxembourg. Its living spaces enjoy breathtaking views over the Moselle valley and the wine-growing areas. This sustainable wood-concrete hybrid construction was created with the timber construction expertise of Blumer-Lehmann AG.

Four spacious and luxurious maisonettes – two garden apartments and two penthouses – are contained within the four-storey apartment building. This residential building is a modern and sophisticated timber construction. The walls with earth contact, the lift shafts and the cellar spaces were all built in solid construction. The result is an apartment building that meets the highest standards when it comes to quality, equipment and timber construction engineering.

Residents of the Sântis housing complex live in great comfort in two-storey maisonette apartments, each accessed separately via an internal timber stairway. The two penthouses each have their own large roof terrace and the two remaining apartments have private garden access. All apartments are wheelchair accessible, barrier-free and have direct lift access.

The building is designed as a timber-frame structure – with no OSB panels – with premium exposed wood-concrete composite ceilings. The residential building's facade is crafted from rendered eco-friendly fibreboard. With its sustainable construction design and energy supply system using photovoltaics and an earth-probe heat pump, the building is aiming for Luxembourg's LENOZ sustainability certificate.

## Specific Contact

[info@blumer-lehmann.com](mailto:info@blumer-lehmann.com)  
[blumer-lehmann.com](http://blumer-lehmann.com)

The fascinating world of wood

# Apartments in wood-concrete hybrid construction

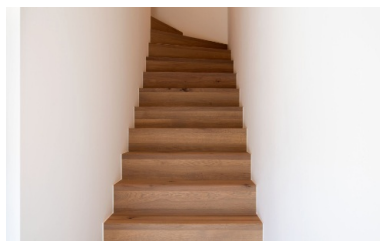
Wasserbillig, LU



The garden flats of the Sântis apartment building have direct access to the garden with a magnificent view.



Inside, exposed wood creates a cosy ambience. Outside, the view over the vineyards is fascinating.



Stylish: the interior design with high-quality materials and elegant colour combinations.

In the garden and penthouse flats, a wooden staircase connects the two floors.

# Apartments in wood-concrete hybrid construction

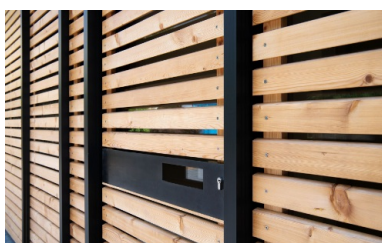
Wasserbillig, LU



The rear of the apartment building with its wooden garages and entrances is very modern and simple.



Stylish and stringently designed façade with a mix of materials and large windows.



Inside and outside, wood sets accents in architecture